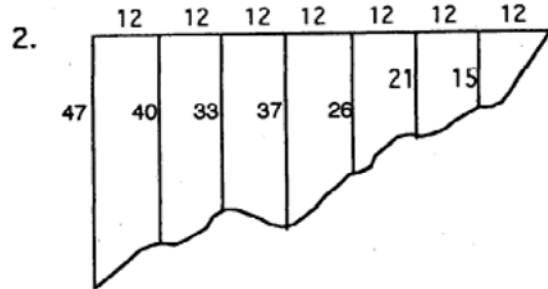
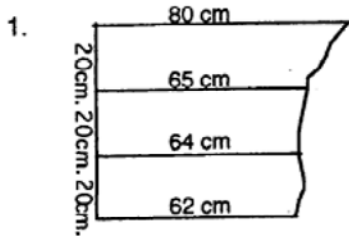
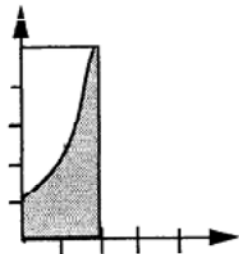




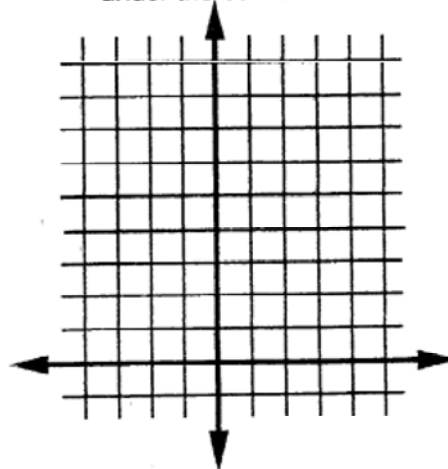
For problems 1 - 4, find the approximate area of each region using the given measurements. Notice that each section of the figure resembles a trapezoid.



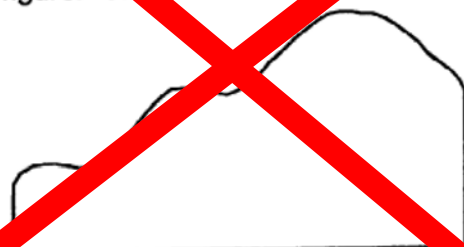
3. Find the area which is shown below under the curve, $y = x^2 + 1$.



4. Graph $y = 9 - x^2$ and find the area under the curve and above the x-axis.



5. Draw vertical lines to create trapezoids of the same width. Measure to the nearest 0.1 cm. Indicate the measurements on the figure. Calculate the entire area.



6. Find the area of the pond.

